

Shuswap Association for Community Living SACL Newsletter

April 2014

#301 - 371 Hudson Avenue NE, PO Box 153, Salmon Arm, BC V1E 4N3 – Phone: 250-832-3885 Fax: 250-832-1076 Website: www.shuswapacl.com



A Year in Review

In this, our 50th year of service to the community, our organization, staff and the people we support took on exceptional new adventures. In accordance with our strategic plan, we worked with the people we support to define the service direction for the future with the goal of community inclusion running in the forefront.

Our objective to move to a centralized downtown location has been realized, and everyone has done a wonderful job adjusting to all the changes!

We enjoyed many events, including our annual beach and Christmas party, and a spectacular “Celebrating the Possibilities” fundraising concert event at the Prestige Harbourfront Resort in September with international and inspirational singer/song-writer Justin Hines.

Welcome!

We are pleased to welcome several new Staff Members in the past year including: **Camilla Matys, Danita Lucier, Dayna Hewitt, Denise Butler, Monica Gignac, and Rosemarie Leering.**

Welcome also to the SACL family - 4 new Persons Supported to our services.

Farewells

Several ‘Good-bye’s’ took place this year as well - some happy adventures in new directions, and some sad farewell to a friend.

Best wishes on their new adventures to **Merrilea Young** and **Sandy Sheloff.**

And Rest in Peace to 2 of our long term Persons Supported and to SACL Employee June **Sarrazin**, who passed away in December of 2013.

You all will be missed and remembered!

In this upcoming year, we will continue to streamline our services towards the goal of community inclusion and employment for the Persons we Support. We look forward to another year of involvement and expansion within our Community!

SACL Values

(As Determined in Consultation with Persons Supported, Families & Care Providers, SACL Staff, Management, Board of Directors & CLBC)

- Friendships & Relationships
- Meaningful Activities
- Life Long Learning
- Having a Say
- Being Safe & Healthy
- A Welcoming Community
- Honoring the Past & Embracing the Future



“Don’t judge each day by the harvest you reap but by the seeds that you plant”

Robert Louis Stevenson

Community Inclusion Services

Community Volunteer Program

Persons Supported are assisted in skill building and contributing to the community of Salmon Arm through volunteer opportunities. Currently, we have 24 Persons Supported volunteering at the following locations;

Salvation Army Food Bank , Churches Salmon Arm Thrift Store , RJ Haney Heritage Village & Museum, Bastion Care Facility, Strong Start (2 Locations), Shuswap Family Resource and Referral Society, Lighthouse Thrift store, and Shuswap Family Daycare.

If you know of anyone looking for a volunteer, or if you would like to partner with one of our Volunteers, please contact Elly Tufts at (250) 832-3885 – Ext: 1101.

Community Supports

Shuswap Association for Community Living currently provides individual one-to-one supports to 17 individuals. SACL staff support healthy lifestyles and community inclusion through skill development, community activities and/or residential living support. Healthy choices are supported through grocery shopping, preparing healthy meals, assisting with cleaning and maintain their own homes and pet care skills etc.

Life Skills supports encourage individuals to learn to maneuver throughout their community via the bus system, make appointments such as dentist or doctor on the phone or in person, and assisting with financial responsibility and budgeting skills.

In the community we insure that Persons Supported take part in meaningful community inclusion activities that they enjoy and encourage health & well-being, such as aqua fit and special O bowling. SACL Staff also provide support to gain skills through Volunteer and Employment opportunities.

Health, Wellness & Life Skills

It's hard to believe it but we've been at our new location for a year now. With this change has come a host of opportunities for new challenges. To begin, we have a new name for our Recreation Program – it will now be called Health, Wellness and Life Skills Services. This reflects our renewed focus based on the results of our 2013 surveys. Our new central location offers us many additional choices for outings and activities.

We currently support 33 people, including a new attendee, who enrolled in services last fall. We have also welcomed 3 new staff members, a new volunteer, and support a number of practicum students as they work with us during their education.

This Spring our Persons Supported will again have the opportunity to participate in the North Okanagan Therapeutic Riding Association's (NOTRA) program at the O'Keefe Ranch in Vernon – a very popular activity. We will also be trying some new activities – Tai Chi, Digital Photography, various computer activities, as well as music sessions focusing on using various instruments and movement to music. Without the generosity of the **Lakeside Community Church** allowing us to use their facilities we would be much more limited in our range of activities – so many thanks! **McGuire Lake Lodge** has also been very supportive in allowing our Persons Supported the use of their pool table and bingo equipment. This has also allowed us a broader scope of activities close to our location.

Mission:

Shuswap Association for Community Living creates opportunities and provides support to optimize the potential of individuals with intellectual disabilities.

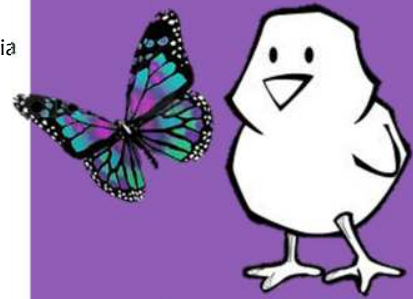
Vision:

We envision a caring and supportive community where all people are valued.



Special Events and Agency Happenings

- **Easter Weekend**
Please note that all SACL Services will be closed on Friday April 18th and Monday, April 21 for Good Friday and Easter Monday.



- **May/June 2014 – CARF Accreditation Survey**
CARF will be visiting in the late spring/early summer to conduct the agency survey for accreditation
- **September 16 2014 at 5pm**
SACL Annual General Meeting
Location to be announced soon at www.shuswapacl.com



Community Employment Services

SACL's Employment Services, which is funded by CLBC, is approaching their 6th year of service to people with disabilities. This program supports individuals in job development and the search for employment in our community and surrounding areas.

There are 35 individuals working in the community with some holding two or more positions at various local business'.

Please help us to show support by frequenting the following local community businesses that support individuals with diverse abilities:

A&W, Advanced Property Systems, Andover Holdings

Askew's Salmon Arm, Askew's Sicamous

Aspiral Youth Partners

BC Hydro, Bowers Funeral Service, Buckerfield's

Canadian Tire, Chevron

CSRD-Columbia Shuswap Regional District

Dairy Queen

Downtown Improvement Association

DAC-Salmon Arm Youth Partner

Family Place, Ford

Gort's Gouda Cheese Farm, Home Building

IGA Market Place Enderby

IMECC Holdings

Kids Club, King's Christian School

LASS-Literacy Alliance of the Shuswap Society

Liberty Tax, Parkview Place

RCMP, RJ Haney Heritage Village

Safeway, Salmon Arm Observer

Senior's Drop in Center

Shoppers Drug Mart

Shuswap Children's Association

Starbucks Coffee Company

Talius, Weight Watchers

WHR-Western Human Resources

WIL Building, Walmart

These diversified business' truly show what this community is all about! Please show your support and appreciation by frequently dropping in for your purchase needs. For more information please remember to visit our website at www.shuswapacl.com

We are ALWAYS looking for more diversified employers in and around this area. Enquiries about how our successful employment process, please call:
Employment Services 250-832-3885 - Extension 1310
for more information.

Employee Profile Robert Hober



Robert Hober has been keeping our streets clean and tidy since 1998. He is experienced with weed control and leaf raking plus maintains streets and sidewalks throughout the year. Robert has proven to be an excellent worker and received a high recognition award in June 2013. This award was presented by Doug Everett from Rotary District 5060. Keep up the great work Robert!

*To all the dedicated, hardworking people from the Shuswap Association for Community Living who help keep our downtown looking so beautiful throughout the year. Whether your Person Supported is street cleaning, composting or helping out with specific initiatives, their contribution to the community is immeasurable and greatly appreciated.
Thank you so very much!*

**Roger Parenteau, Membership & Community Coordinator
Downtown Salmon Arm**
358 Alexander Street, Box 1928
Salmon Arm, BC V1E 4H8
www.salmonarmdowntown.com

Thanks for Your Valuable Input!

Thank you to all those who completed the 2013 Satisfaction Surveys! Your contributions and valued input help us to improve our services and determine future objectives! The following 7 Surveys were posted to Persons Supported, Family and Care Givers, Stakeholders, Employers and Community Members.

Community Integration – Persons Supported
(78.5% are Satisfied with current services)

Community Integration – Stakeholders & Community Members
(84.84% are Satisfied with current services)

Employment Services – Persons Supported
(79.13% are Completely Satisfied with current services)

Employment Services – Stakeholders & Community Members
(82.71% are Satisfied with current services)

Employment Services – Employers
(86.84% are Satisfied with current services)

Supported Living – Persons Supported & Stakeholders/Community Members
(80.96% are Satisfied with current services)

Respite – Persons Supported & Stakeholders/Community Members
(87.5% are Satisfied with current services)

Although we attained an 82.87% satisfaction rate, we continue to review the results to define trends and weaknesses. SACL 2014 Performance Improvement Action Plan available online in May of 2014. For full survey results, please visit our website at the link provided below. This year, the 2014 Satisfaction surveys will remain open all year so that everyone has the opportunity to comment. Please take a few minutes to visit our website (link below) to give us your thoughts. All input is valuable and appreciated!

<http://shuswapacl.com/frequently-asked-questions/#.UydMql9rZ9A>



The Persons we Support Say:

"I like our new location, the staff and my friends"

"I would like to do more things where I can work with kids – I like kids!"

Stakeholders in the Community Say:

"SACL is limited to ask for more handy dart services. Not all Persons Supported are able to participate in the community, and not all are able to function in the community"

Employers Say:

"We enjoy giving opportunity for self-sufficiency and self-worth through employment"

"We appreciate the dedication and sense of humour of the employee hired through SACL!"

A Message from the Executive Director

Shuswap Association for Community Living is committed to the Persons we Support and their families. Our Board and Staff are motivated every day by our mission to create opportunities and provide support to optimize the potential of individuals with intellectual disabilities.

In June we will have completed our 2011-2014 three year Strategic Plan. This Fall we will begin the process of creating our next plan, doing the research that will solicit input from many sources including Persons Supported, Community Partners, Stakeholders and Staff.

With dedicated, innovative and compassionate Staff and Board of Directors along with tremendous support from our community, SACL continues to build on our 50 years of service and are looking forward to meeting the challenges of tomorrow!

Jo-Anne Crawford

Please Donate!

Yes, I would like to support SACL at www.shuswapacl.com or Mail, Fax or Drop-off my Donation.

To: #301 – 371 Hudson Avenue NE Mailing Address: Po Box 153, Salmon Arm BC V1E 4N3 Phone: 250-832-3885 Fax: 250-832-1076

Name: _____

Cash Cheque Money Order Other

Address: _____

\$25 \$50 \$100 \$250 \$500 Other _____

City: _____ Province: _____ Postal Code: _____

All charitable donations over \$20 will be issued a Tax Receipt
Charitable Donation # - 107979247RR0001

Email: _____ Phone: _____